

*The Hartley  
Family  
Genealogy*





## Descendants of Richard Hartley

### Generation No. 1

1. RICHARD<sup>1</sup> HARTLEY was born Abt. 1721 in Rochdale, Lancaster, England. He married ALICE WHITTAKER 30 Sep 1746 in St Chad, Rochdale, Lancashire, England. She was born 19 Oct 1725 in Rochdale, Lancaster, England, and died 23 Sep 1772.



*John Speed's map of Lancaster 1610*

Child of RICHARD HARTLEY and ALICE WHITTAKER is:

2. i. JAMES<sup>2</sup> HARTLEY, b. Abt. 1747, Rochdale, Lancaster, England.

### Generation No. 2

2. JAMES<sup>2</sup> HARTLEY (*RICHARD*<sup>1</sup>) was born Abt. 1747 in Rochdale, Lancaster, England. He married ANN MILLS 27 Sep 1772 in Rochdale, Lancaster, England. She was born Abt. 1751 in Rochdale, Lancaster, England.

Child of JAMES HARTLEY and ANN MILLS is:

3. i. JAMES<sup>3</sup> HARTLEY, b. 15 Oct 1772, Birmingham, Lancashire, England.



Generation No. 3

3. JAMES<sup>3</sup> HARTLEY (*JAMES<sup>2</sup>, RICHARD<sup>1</sup>*) was born 15 Oct 1772 in Birmingham, Lancashire, England. He married MARTHA HODGON 17 Oct 1792 in Colne, Lancashire, daughter of TEMPEST HODGON and MARTHA HAWARTH. She was born 29 Dec 1765 in Birmingham, Lancashire.



*Colne, Lancashire*

Child of JAMES HARTLEY and MARTHA HODGON is:

- 4. i. JAMES<sup>4</sup> HARTLEY, b. 17 Aug 1799, Worthley, England.

Generation No. 4

4. JAMES<sup>4</sup> HARTLEY (*JAMES<sup>3</sup>, JAMES<sup>2</sup>, RICHARD<sup>1</sup>*) was born 17 Aug 1799 in Worthley, England. He married ELIZABETH PULLAN 30 Apr 1821 in Leeds, West Yorkshire, England, daughter of JOSEPH PULLAN and ELIZABETH DAW. She was born Abt. 1800 in Wickwar, Gloucestershire, England, and died Jan 1840 in Gloucestershire, England.

Notes for JAMES HARTLEY: Occupation in 1822 was as a Clothier

Children of JAMES HARTLEY and ELIZABETH PULLAN are:

- 5. i. EDWARD<sup>5</sup> HARTLEY, b. 04 Sep 1822, Bramley, Yorkshire, England; d. 27 Oct 1907, Bradford, Yorkshire, England.
- ii. ANN HARTLEY.
- iii. CHRISTOPHER HARTLEY.
- iv. MARGARET HARTLEY.
- v. WILLIAM HARTLEY, b. Abt. 1821.

**MARRIAGES solemnized in the PARISH CHURCH of LEEDS, in the County of YORK, in the Year 1821**

*James Hartley* of *this* Parish  
*Clothier*

and *Elizabeth Pullan* of *this* Parish  
*Spunster*

were married in this CHURCH, by *Banns*  
 this *thirtieth* Day of  
*April* in the Year One thousand eight hundred and *twenty one*

By me *Robert Humphreys, Clerk*

This Marriage was solemnized between us } *James Hartley*  
 & *Elizabeth Pullan's mark*

In the Presence of } *William Pullan*  
 & *Robt. Humphreys*

No. *255*

*James Hartley And Elizabeth Pullan's Marriage Register*



*Generation No. 5*

5. EDWARD<sup>5</sup> HARTLEY (*JAMES<sup>4</sup>, JAMES<sup>3</sup>, JAMES<sup>2</sup>, RICHARD<sup>1</sup>*) was born 04 Sep 1822 in Bramley, Yorkshire, England, and died 27 Oct 1907 in Bradford, Yorkshire, England. He married CHARLOTTE ISABELLA PARFITT 11 Jun 1843 in St Marks Church, Woodhouse, Leeds, Yorkshire, daughter of WILLIAM PARFITT and HANNAH TOMLINSON. She was born Abt. 1822 in Leeds, Yorkshire, England, and died Sep 1898 in West Riding, West Yorkshire, United Kingdom.

Notes for EDWARD HARTLEY:

In 1843 Edward was a Calenderer which is a person who operates a machine in which paper or cloth is made smooth and glossy by being pressed through rollers.



*Old calender machine*

Children of EDWARD HARTLEY and CHARLOTTE PARFITT are:

6.
  - i. WILLIAM<sup>6</sup> HARTLEY, b. 22 Feb 1847, Saltaire, Yorkshire, England; d. 22 Jan 1917, Wellington.
  - ii. SARAH JANE HARTLEY, b. Mar 1844, Hunslet, Yorkshire, England; d. 13 May 1905, Chicopee, Massachusetts, USA.
  - iii. CHARLES HARTLEY, b. 1846, Hallifax, Yorkshire, England.
  - iv. AMY HARTLEY, b. Abt. 1849, Bramley, Yorkshire, England.
  - v. JAMES HARTLEY, b. Abt. 1853, Leeds, Yorkshire, England; m. MARY ANN ?.
  - vi. FRANCES (FANNY) HARTLEY, b. Abt. 1856, Holbeck, Yorkshire, England.
  - vii. SAMUEL HARTLEY, b. 1858, Holbeck, Yorkshire, England.
  - viii. ELIZA HARTLEY, b. 1861, Holbeck, Yorkshire, England.

1842. Marriage solemnized at <i>St Marks Church</i> in the <i>parish of Woodhouse</i> in the County of <i>York</i>								
No.	When Married.	Name and Surname.	Age.	Condition.	Rank or Profession.	Residence at the Time of Marriage.	Father's Name and Surname.	Rank or Profession of Father.
73	June 11	<i>Edward Hartley</i>	<i>above 21</i>	<i>bachelor</i>	<i>calendarer</i>	<i>Woodhouse</i>		
		<i>Charlotte Isabella Parfitt</i>	<i>above 16</i>	<i>spinster</i>		<i>Woodhouse</i>	<i>William Parfitt</i>	<i>calendarer</i>
Married in the <i>parish of Woodhouse</i> according to the Rites and Ceremonies of the Established Church, <i>at the house of</i> _____ by me, <i>Wm Taylor</i>								
This Marriage was solemnized between us,		<i>Edward Hartley</i>	in the Presence of us,		<i>William Taylor</i>	<i>James Hales</i>		

*Edward and Charlotte's Marriage Certificate*



*Edward Hartley married Charlotte Isabella Parfitt  
11 Jun 1843  
at St Marks Church, Woodhouse, Leeds, Yorkshire*



*Generation No. 6*

6. WILLIAM<sup>6</sup> HARTLEY (*EDWARD*<sup>5</sup>, *JAMES*<sup>4</sup>, *JAMES*<sup>3</sup>, *JAMES*<sup>2</sup>, *RICHARD*<sup>1</sup>) was born 22 Feb 1847 in Saltaire, Yorkshire, England, and died 22 Jan 1917 in Wellington. He married (1) REBECCA WOOD Abt. 1869 in Saltaire, Yorkshire, England, daughter of SAMUEL WOOD and MARY ?. She was born in Yorkshire, and died 06 Jul 1879 in Wellington. He married (2) ELIZABETH ELLEN RICHARDSON 03 Oct 1879 in Wellington, daughter of WILLIAM RICHARDSON and ANNIE MILLS. She was born Abt. 1857 in Oxfordshire, and died 26 Nov 1925 in Wellington.

Notes for WILLIAM HARTLEY: Arrived in NZ on the Dallam Tower in 1874

Children of WILLIAM HARTLEY and ELIZABETH RICHARDSON are:

7. i. CHARLES<sup>7</sup> HARTLEY, b. 17 Jan 1886, Wellington; d. 14 May 1928, Tauranga.
8. ii. ADA HARTLEY, b. 08 Aug 1880; d. 31 Mar 1965.
9. iii. GERTRUDE HARTLEY, b. 17 Oct 1881; d. 27 Mar 1947.
10. iv. GRACE HARTLEY, b. 09 May 1883; d. Abt. 1950.  
v. ETHEL HARTLEY, b. 14 Jun 1884; d. Abt. 1956; m. SPIDER BRANDON.
11. vi. EDWARD (TED) HARTLEY, b. 03 Aug 1887; d. 1952.
12. vii. MAY HARTLEY, b. 12 Jan 1889; d. 10 Nov 1918.
13. viii. GEORGE HARTLEY, b. 01 Jan 1890; d. 01 Apr 1976.
14. ix. OLIVE HARTLEY, b. 23 Jun 1891; d. 20 Aug 1971.
15. x. HENRY HARTLEY, b. 14 Sep 1892; d. 1983.



*The Hartley Family in 1903*  
*(back row) May, Charles, George, Gertrude, Edward, Ada*  
*(front row) Ethel, Henry, William, Elizabeth, Olive and Grace*



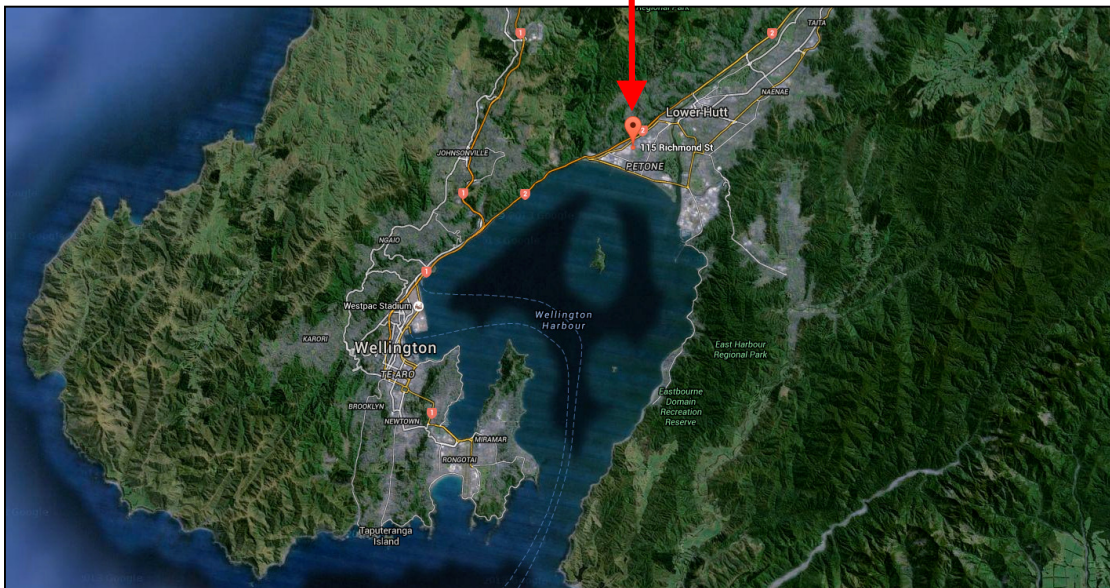


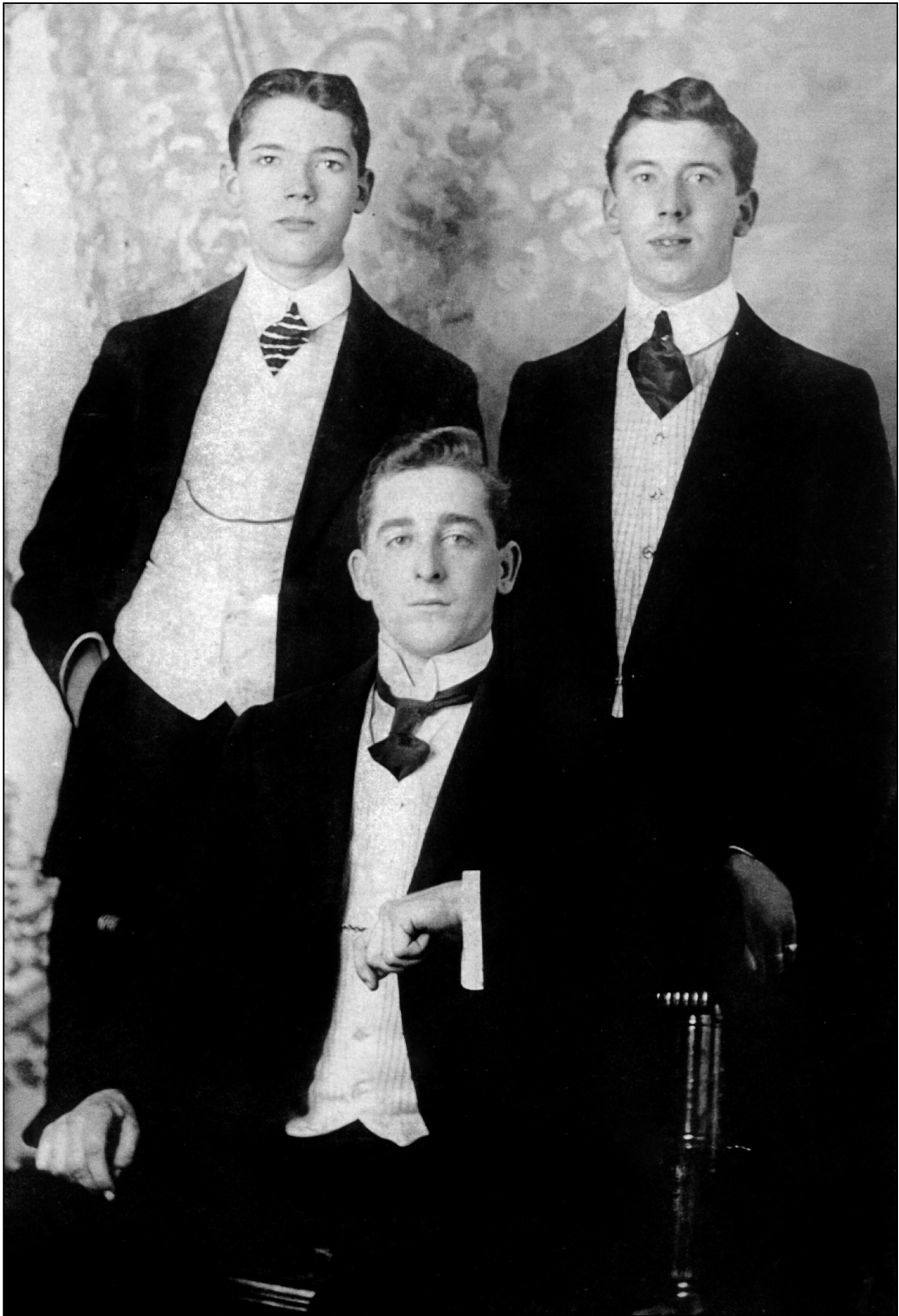
*William Hartley And Elizabeth Richardson*





*115 Richmond Street, Petone  
Family home in Wellington built by William Hartley in 1886*





*George, Charles & Henry Hartley*



*Generation No. 7*

**7.** CHARLES<sup>7</sup> HARTLEY (*WILLIAM<sup>6</sup>, EDWARD<sup>5</sup>, JAMES<sup>4</sup>, JAMES<sup>3</sup>, JAMES<sup>2</sup>, RICHARD<sup>1</sup>*) was born 17 Jan 1886 in Wellington, and died 14 May 1928 in Tauranga. He married MABEL EMMA SHARON 19 Oct 1910 in Petone, daughter of EDWARD SHARON and ELIZA BROWN. She was born 22 May 1891 in Waihopo, Mangauui, Northland, and died 07 Feb 1976 in Tauranga.

Children of CHARLES HARTLEY and MABEL SHARON are:

16. i. PHYLLIS EDNA<sup>8</sup> HARTLEY, b. 19 Aug 1911, Kaponga, Taranaki, New Zealand; d. 27 Jul 1977, Auckland.
17. ii. NANCY DAWN HARTLEY, b. 11 Aug 1918, Tauranga; d. 12 Jul 2017, Auckland.
18. iii. HELEN JOY HARTLEY, b. 02 Dec 1921, Tauranga; d. 05 Dec 2013, Taupo.
19. iv. CHARLES WILLIAM HARTLEY, b. 05 Nov 1925, Tauranga; d. 17 Jun 2011, Tauranga.

**8.** ADA<sup>7</sup> HARTLEY (*WILLIAM<sup>6</sup>, EDWARD<sup>5</sup>, JAMES<sup>4</sup>, JAMES<sup>3</sup>, JAMES<sup>2</sup>, RICHARD<sup>1</sup>*) was born 08 Aug 1880, and died 31 Mar 1965. She married ROBERT WILLIAM RISING 19 Mar 1908. He was born 1870, and died 30 Nov 1945.

Child of ADA HARTLEY and ROBERT RISING is:

20. i. MILDRED LOUISE<sup>8</sup> RISING, b. 10 Jun 1909; d. 08 Nov 1991.

**9.** GERTRUDE<sup>7</sup> HARTLEY (*WILLIAM<sup>6</sup>, EDWARD<sup>5</sup>, JAMES<sup>4</sup>, JAMES<sup>3</sup>, JAMES<sup>2</sup>, RICHARD<sup>1</sup>*) was born 17 Oct 1881, and died 27 Mar 1947. She married ALFRED HYLTON MEDHURST 26 Mar 1902. He was born 14 Apr 1878, and died 22 Mar 1944.

Children of GERTRUDE HARTLEY and ALFRED MEDHURST are:

- i. HYLTON<sup>8</sup> MEDHURST, b. 12 Apr 1903; d. 1971; m. MABEL FLORENCE JESSIE DENT, 1927; b. 18 Sep 1905; d. 1975.
- ii. GEORGE EDWARD MEDHURST, b. 05 Jun 1904; d. 03 Apr 1972; m. WINIFRED GWENDOLINE SLACK, 1932; b. 15 Mar 1913; d. 27 Aug 1969.
- iii. OLIVE BARBARA MEDHURST, b. 18 Nov 1905; d. 07 Jun 1990; m. DAVID WILSON FOX, 1934; b. 27 Apr 1903; d. 11 Dec 1981.
- iv. GERTRUDE (TRUDA) MAY MEDHURST, b. 25 Oct 1908; d. 27 Mar 1996; m. (1) JOHN MCLAUGHLIN, 1927; b. 1902; d. 1968; m. (2) MAURICE (MOSS) MADIGAN, Nov 1981; b. 15 Jul 1914; d. 1982.
- v. ALFRED JOSEPH MEDHURST, b. 17 Mar 1911; d. 26 May 1978; m. IRIS GERALDINE WELLS, 07 Dec 1946; b. 01 Oct 1921; d. 16 Sep 1994.

**10.** GRACE<sup>7</sup> HARTLEY (*WILLIAM<sup>6</sup>, EDWARD<sup>5</sup>, JAMES<sup>4</sup>, JAMES<sup>3</sup>, JAMES<sup>2</sup>, RICHARD<sup>1</sup>*) was born 09 May 1883, and died Abt. 1950. She married THOMAS CAVERHILL Mar 1908. He was born 25 Dec 1882, and died Abt. 1950.

Child of GRACE HARTLEY and THOMAS CAVERHILL is:

- i. JEAN<sup>8</sup> CAVERHILL, b. 23 Jan 1909; d. 12 Oct 1989; m. BERTRAM (BERT) PRINGLE, 1932; b. 03 Oct 1905; d. 1982.

**11.** EDWARD (TED)<sup>7</sup> HARTLEY (*WILLIAM<sup>6</sup>, EDWARD<sup>5</sup>, JAMES<sup>4</sup>, JAMES<sup>3</sup>, JAMES<sup>2</sup>, RICHARD<sup>1</sup>*) was born 03 Aug 1887, and died 1952. He married FLORENCE EDMONDS 19 May 1916. She died 1963.

Children of EDWARD HARTLEY and FLORENCE EDMONDS are:

- i. HAZEL<sup>8</sup> HARTLEY, b. 1917; d. 1988; m. JOHN (JACK) TETLEY, 1944; d. 1971.
- ii. LEWIS HARTLEY, b. 1918; m. MARY DUGGAN.
- iii. IRIS HARTLEY, b. 1922; m. ROBERT (BOB) LEWIS.
- iv. NOEL HARTLEY, b. 1929; m. NELDA GODDARD.

**12.** MAY<sup>7</sup> HARTLEY (*WILLIAM<sup>6</sup>, EDWARD<sup>5</sup>, JAMES<sup>4</sup>, JAMES<sup>3</sup>, JAMES<sup>2</sup>, RICHARD<sup>1</sup>*) was born 12 Jan 1889, and died 10 Nov 1918. She married HAROLD THOMAS NEWNHAM 25 Sep 1908. He was born 04 Jan 1890, and died 17 Jun 1967.

Children of MAY HARTLEY and HAROLD NEWNHAM are:

- i. CLAUDE<sup>8</sup> NEWNHAM, b. 21 Nov 1908; d. 15 Jun 1967; m. MAISIE ?.
- ii. WILLIAM (BILL) NEWNHAM, b. 22 Nov 1910; d. 24 Mar 2003; m. LOTTIE COMPTON.
- iii. CHARLES NEWNHAM, b. 25 Feb 1913; d. 05 Mar 2014; m. BERNICE THORN, 1938.
- iv. ARNOLD NEWNHAM, b. 14 Jul 1917; d. 19 Oct 2009; m. (1) DOROTHY HULME, Abt. 1942; d. 1959; m. (2) MABEL LEAHEY, 14 Oct 1961; d. 23 May 1996.

**13.** GEORGE<sup>7</sup> HARTLEY (*WILLIAM<sup>6</sup>, EDWARD<sup>5</sup>, JAMES<sup>4</sup>, JAMES<sup>3</sup>, JAMES<sup>2</sup>, RICHARD<sup>1</sup>*) was born 01 Jan 1890, and died 01 Apr 1976. He married (1) HILDA GOULD. He married (2) LINDA MEIKLE 1921. She died Abt. 1926.

Child of GEORGE HARTLEY and HILDA GOULD is:

- i. RIO<sup>8</sup> HARTLEY, b. 11 May 1934.

Child of GEORGE HARTLEY and LINDA MEIKLE is:

- ii. GARWIN<sup>8</sup> HARTLEY, b. 1921; m. JUNE WILLIAMS.

**14.** OLIVE<sup>7</sup> HARTLEY (*WILLIAM<sup>6</sup>, EDWARD<sup>5</sup>, JAMES<sup>4</sup>, JAMES<sup>3</sup>, JAMES<sup>2</sup>, RICHARD<sup>1</sup>*) was born 23 Jun 1891, and died 20 Aug 1971. She married ALBERT EDWARD WHITE 1910. He was born 22 Oct 1888, and died May 1952.

Children of OLIVE HARTLEY and ALBERT WHITE are:

- i. LIONEL ALBERT<sup>8</sup> WHITE, b. 19 Oct 1910; d. 29 Sep 1992; m. TANIA WHITE; b. 27 May 1916.
- ii. ELLEN CHARLOTTE WHITE, b. 20 Jun 1913; d. 15 Apr 1987; m. LENIS (LEN) SAMUEL CHARLES BENGGE; b. 31 Mar 1909; d. 17 Aug 1999.
- iii. FREDA OLIVE WHITE, b. 10 Jul 1915; d. 12 Oct 2001; m. HERBERT (BERT) EDWARDS, 1936; b. 12 Aug 1907; d. 12 Jul 1996.
- iv. BRIAN WHITE, b. 20 Jan 1917; d. 20 Dec 1941, on board HMNZS Neptune after hitting a mine.
- v. JOAN FRANCES WHITE, b. 25 Dec 1918; d. 29 May 2010; m. ROBERT (BOB) WILLIAMS; b. 25 Jun 1909; d. 17 Feb 1997.
- vi. MARJORIE WHITE, b. 15 May 1921; d. 1939.
- vii. BETTY MAE WHITE, b. 25 Jul 1923; d. 22 Sep 2011; m. FRANK BARTON GREENEM, 09 Oct 1946; b. 09 Oct 1916; d. 12 Apr 2002.
- viii. KENNETH ARTHUR WHITE, b. 06 Sep 1925; d. 20 Oct 2009; m. HAZEL DOROTHEA (DAWN) HANSEN, 1948; b. 13 Apr 1928; d. 06 Dec 2011.

**15.** HENRY<sup>7</sup> HARTLEY (*WILLIAM<sup>6</sup>, EDWARD<sup>5</sup>, JAMES<sup>4</sup>, JAMES<sup>3</sup>, JAMES<sup>2</sup>, RICHARD<sup>1</sup>*) was born 14 Sep 1892, and died 1983. He married ANNE JONES 04 Jun 1923. She was born 1900, and died 1991.

Children of HENRY HARTLEY and ANNE JONES are:

- i. MAURICE<sup>8</sup> HARTLEY, b. 31 May 1924; m. MYRA HOLMES, 1948; b. 31 Dec 1919; d. 10 Aug 1998.
- ii. JOHN (GERALD) HARTLEY, b. 31 Mar 1926; d. 10 Mar 2011; m. (1) ALISON SUTHERLAND; m. (2) LORNA MILLS, 01 Apr 1947; b. 23 Aug 1926, Gisborne; d. 22 Sep 1965.
- iii. KEITH HARTLEY, b. 17 Jan 1928; d. Abt. 1997; m. CECILY HOLTHAM.
- iv. DOROTHY ROSE HARTLEY, b. 09 Oct 1930; d. 30 Jun 2002; m. STANLEY BLACKMORE.
- v. NANCY HARTLEY, b. 28 Feb 1939; m. PATRICK LEWIS, 1953; b. 1930; d. 1978.
- vi. LINDSEY HARTLEY, b. 07 Jun 1942; m. BRIAN OLDING, 1960; b. 1937.

Generation No. 8

**16.** PHYLLIS EDNA<sup>8</sup> HARTLEY (*CHARLES<sup>7</sup>, WILLIAM<sup>6</sup>, EDWARD<sup>5</sup>, JAMES<sup>4</sup>, JAMES<sup>3</sup>, JAMES<sup>2</sup>, RICHARD<sup>1</sup>*) was born 19 Aug 1911 in Kaponga, Taranaki, New Zealand, and died 27 Jul 1977 in Auckland. She married OWEN KEALL WINSTONE 21 Sep 1936 in St. Mark's Church, Remuera, Auckland, son of GEORGE WINSTONE and HANNAH RICHARDSON. He was born 15 Jun 1908 in Auckland, New Zealand, and died 03 Jul 1991 in Auckland, New Zealand.

Children of PHYLLIS HARTLEY and OWEN WINSTONE are:

21. i. ROBYN MARY<sup>9</sup> WINSTONE, b. 20 Mar 1941, Takapuna, Auckland.
- ii. CHARLES HARTLEY WINSTONE, b. 19 Oct 1943, Takapuna, Auckland; d. 22 Sep 1952, Nelson.
22. iii. PETER ROSS WINSTONE, b. 18 Jun 1951, Devonport, Auckland.

**17.** NANCY DAWN<sup>8</sup> HARTLEY (*CHARLES<sup>7</sup>, WILLIAM<sup>6</sup>, EDWARD<sup>5</sup>, JAMES<sup>4</sup>, JAMES<sup>3</sup>, JAMES<sup>2</sup>, RICHARD<sup>1</sup>*) was born 11 Aug 1918 in Tauranga, and died 12 Jul 2017 in Auckland. She married WILLIAM REID 18 Dec 1943 in Tauranga. He was born Feb 1928 in Canada, and died 1987 in Tauranga.

Children of NANCY HARTLEY and WILLIAM REID are:

23. i. SUSAN JANET<sup>9</sup> REID, b. 14 Jul 1945, Winnipeg, Canada.
- ii. WILLIAM DENNESS REID, b. 14 Oct 1947, Tauranga; d. 23 Oct 1966, Tauranga, killed by drunk driver.

**18.** HELEN JOY<sup>8</sup> HARTLEY (*CHARLES<sup>7</sup>, WILLIAM<sup>6</sup>, EDWARD<sup>5</sup>, JAMES<sup>4</sup>, JAMES<sup>3</sup>, JAMES<sup>2</sup>, RICHARD<sup>1</sup>*) was born 02 Dec 1921 in Tauranga, and died 05 Dec 2013 in Taupo. She married DOUGLAS BANKS COLLINS 17 Nov 1945 in Tauranga. He was born 21 Feb 1919 in Dunedin, and died 19 Jan 1980 in Taupo.

Children of HELEN HARTLEY and DOUGLAS COLLINS are:

24. i. JENNIFER HELEN COLLINS, b. 12 Oct 1948, Tauranga.
25. ii. BRUCE DOUGLAS<sup>9</sup> COLLINS, b. 27 May 1952, Tauranga.
26. iii. DIANE GLORIA COLLINS, b. 08 Nov 1955, Tauranga.

**19.** CHARLES WILLIAM<sup>8</sup> HARTLEY (*CHARLES<sup>7</sup>, WILLIAM<sup>6</sup>, EDWARD<sup>5</sup>, JAMES<sup>4</sup>, JAMES<sup>3</sup>, JAMES<sup>2</sup>, RICHARD<sup>1</sup>*) was born 05 Nov 1925 in Tauranga, and died 17 Jun 2011 in Tauranga. He married (1) JEAN LAMBOURNE 13 Sep 1952 in Auckland. She was born 18 Dec 1928 in Auckland, and died 8 Jan 1966 in Auckland. He married (2) DEIDRE FAY SMITH. She was born 15 Oct 1938 in Auckland and died 27 Oct 2010 in Whakatane.

Children of CHARLES HARTLEY and JEAN LAMBOURNE are:

27. ii. VIRGINIA ANNE<sup>9</sup> HARTLEY, b. 18 Aug 1953, Tauranga.
28. iii. PATRICIA JEAN HARTLEY, b. 05 Nov 1954, Auckland.
29. iv. CHARLES JOHN (JOHN) HARTLEY, b. 28 Jun 1956, Tauranga; d. 10 Feb 2001, Kaiua, Thames, NZ.
30. v. BRIAN PHILIP HARTLEY, b. 12 Oct 1958, Tauranga.

Child of CHARLES HARTLEY and DEIDRE SMITH is:

- i. IAN DAVID<sup>9</sup> HARTLEY, b. 07 Mar 1976, Tauranga.

**20.** MILDRED LOUISE<sup>8</sup> RISING (*ADA<sup>7</sup> HARTLEY, WILLIAM<sup>6</sup>, EDWARD<sup>5</sup>, JAMES<sup>4</sup>, JAMES<sup>3</sup>, JAMES<sup>2</sup>, RICHARD<sup>1</sup>*) was born 10 Jun 1909, and died 08 Nov 1991. She married DAVID JOHN HENDERSON 21 Dec 1939. He was born 17 Oct 1913, and died 07 May 1984.

Children of MILDRED RISING and DAVID HENDERSON are:

- i. EWEN ROSS<sup>9</sup> HENDERSON, b. 12 Jul 1941.
- ii. COLIN DAVID HENDERSON, b. 15 Aug 1943.
- iii. NEIL WILLIAM HENDERSON, b. 12 Nov 1945.
- iv. CLARE LOUISE HENDERSON, b. 31 Jan 1949.



Generation No. 9

**21.** ROBYN MARY<sup>9</sup> WINSTONE (*PHYLLIS EDNA<sup>8</sup> HARTLEY, CHARLES<sup>7</sup>, WILLIAM<sup>6</sup>, EDWARD<sup>5</sup>, JAMES<sup>4</sup>, JAMES<sup>3</sup>, JAMES<sup>2</sup>, RICHARD<sup>1</sup>*) was born 20 Mar 1941 in Takapuna, Auckland. She married (1) EDWARD MILTON (MILTON) BARBER 26 Aug 1961 in St Peters Anglican Church, Takapuna, Auckland, son of EDWARD BARBER and GLADYS BROWN. He was born 20 Feb 1937 in Takapuna, Auckland, New Zealand, and died 01 Sep 1975 in Auckland. She married (2) GORDON CYRIL HARRIS 07 Apr 1976 in Anglican Church, Greenhithe, son of CYRIL HARRIS and MURIEL NUTT. He was born 26 Sep 1926 in Auckland, and died 22 Apr 2007 in Takapuna, Auckland, New Zealand.

Children of ROBYN WINSTONE and EDWARD BARBER are:

- i. EDWARD OWEN<sup>10</sup> BARBER, b. 07 May 1964, Takapuna, Auckland, New Zealand; d. 07 May 1964, Takapuna, Auckland, New Zealand.
- ii. GEOFFREY MILTON BARBER, b. 23 May 1965, Takapuna, Auckland, New Zealand; m. KAREN LYNETTE DREW, 28 Jul 2007, Methodist Church, Takapuna, Auckland; She was b. 30 Mar 1967.
31. iii. ROWAN JANE BARBER, b. 08 Nov 1967, Epsom, Auckland, New Zealand.
32. iv. PAUL WINSTONE BARBER, b. 12 Sep 1970, Takapuna, Auckland, New Zealand.

**22.** PETER ROSS<sup>9</sup> WINSTONE (*PHYLLIS EDNA<sup>8</sup> HARTLEY, CHARLES<sup>7</sup>, WILLIAM<sup>6</sup>, EDWARD<sup>5</sup>, JAMES<sup>4</sup>, JAMES<sup>3</sup>, JAMES<sup>2</sup>, RICHARD<sup>1</sup>*) was born 18 Jun 1951 in Devonport, Auckland. He married (1) FELICITY MARGARET NICHOLLS 10 May 1975 in St Peters Anglican Church, Takapuna, Auckland, daughter of VIVIAN NICHOLLS and FRANCES WRIGHT. She was born 28 Jul 1955 in Auckland. He married (2) JOY KIM 19 Nov 1994 in Warkworth. She was born 03 Mar 1956 in YeoSoo, Korea.

Children of PETER WINSTONE and FELICITY NICHOLLS are:

33. i. DAVID PETER<sup>10</sup> WINSTONE, b. 05 Sep 1978, Auckland.
34. ii. GRETA FELICITY WINSTONE, b. 11 Jan 1981, Warkworth.
- iii. JOHN VIVIAN WINSTONE, b. 27 Oct 1984, Whangarei.

**23.** SUSAN JANET<sup>9</sup> REID (*NANCY DAWN<sup>8</sup> HARTLEY, CHARLES<sup>7</sup>, WILLIAM<sup>6</sup>, EDWARD<sup>5</sup>, JAMES<sup>4</sup>, JAMES<sup>3</sup>, JAMES<sup>2</sup>, RICHARD<sup>1</sup>*) was born 14 Jul 1945 in Winnipeg, Canada. She married WILLIAM JAMES WILSON 29 Oct 1969 in Tauranga, son of STUART WILSON and UNA JAMES. He was born 18 Sep 1938.

Children of SUSAN REID and WILLIAM WILSON are:

35. i. WILLIAM JAMES REID<sup>10</sup> WILSON, b. 06 Feb 1972, Rotorua.
36. ii. MATTHEW DENNESS WILSON, b. 27 Jul 1973, Auckland.

**24.** JENNIFER HELEN<sup>9</sup> COLLINS (*HELEN JOY<sup>8</sup> HARTLEY, CHARLES<sup>7</sup>, WILLIAM<sup>6</sup>, EDWARD<sup>5</sup>, JAMES<sup>4</sup>, JAMES<sup>3</sup>, JAMES<sup>2</sup>, RICHARD<sup>1</sup>*) was born 12 Oct 1948 in Tauranga. She married GRAEME GIBSON 02 Jan 1971. He was born 30 Jul 1948 in Auckland.

Children of JENNIFER COLLINS and GRAEME GIBSON are:

37. i. TRACEY HELEN<sup>10</sup> GIBSON, b. 20 Jun 1976, Tauranga.
- ii. PENELOPE JEAN GIBSON, b. 20 Jun 1976, Tauranga.
38. iii. KATIE JENNIFER GIBSON, b. 31 Jan 1982, Tauranga.
39. iv. MICHAEL GRAEME GIBSON, b. 23 Jul 1984, Tauranga.

**25.** BRUCE DOUGLAS<sup>9</sup> COLLINS (*HELEN JOY<sup>8</sup> HARTLEY, CHARLES<sup>7</sup>, WILLIAM<sup>6</sup>, EDWARD<sup>5</sup>, JAMES<sup>4</sup>, JAMES<sup>3</sup>, JAMES<sup>2</sup>, RICHARD<sup>1</sup>*) was born 27 May 1952 in Tauranga. He married (1) CHRISTINE FRANCES OWEN 28 Dec 1974 in Perth, Australia. She was born 1953 in Blenheim. He married (2) SHELAGH MARY BOLTON 10 Nov 1984 in Ruakaka, Northland, NZ. She was born 22 Jan 1952 in Essex, England.

Children of BRUCE COLLINS and SHELAGH BOLTON are:

- i. IMELDA ANNE<sup>10</sup> COLLINS, b. 20 Nov 1985, Whangarei; NZ m. MARTIN ASHBURNER, 14 Jan 2007, Picton, New Zealand; b. 7 Jun 1981 Turrumurra, NSW, Australia. Their daughter, BRIGID ANNE ASHBURNER was born 1 Jul 2018 at Albany, Western Australia.
- ii. LYSSA MAY COLLINS, b. 24 Jun 1989, New Plymouth.

**26.** DIANE GLORIA<sup>9</sup> COLLINS (*HELEN JOY<sup>8</sup> HARTLEY, CHARLES<sup>7</sup>, WILLIAM<sup>6</sup>, EDWARD<sup>5</sup>, JAMES<sup>4</sup>, JAMES<sup>3</sup>, JAMES<sup>2</sup>, RICHARD<sup>1</sup>*) was born 08 Nov 1955 in Tauranga. She married IAN DONALD MATHESON 14 Jan 1978 in Tauranga. He was born 1953 in Christchurch, NZ.

Children of DIANE COLLINS and IAN MATHESON are:

40. i. STEVEN IAN<sup>10</sup> MATHESON, b. 06 Dec 1981, Rotorua.
- ii. JULIE MATHESON, b. 28 May 1983, Rotorua; d. 28 May 1983, Rotorua.
- iii. PHILLIP DOUGLAS MATHESON, b. 21 Feb 1985, Rotorua.
- iv. NEIL DONALD MATHESON, b. 02 Aug 1987, Rotorua.

**27.** VIRGINIA ANNE<sup>9</sup> HARTLEY (*CHARLES WILLIAM<sup>8</sup>, CHARLES<sup>7</sup>, WILLIAM<sup>6</sup>, EDWARD<sup>5</sup>, JAMES<sup>4</sup>, JAMES<sup>3</sup>, JAMES<sup>2</sup>, RICHARD<sup>1</sup>*) was born 18 Aug 1953 in Tauranga. She married (1) MARTIN MOLONEY 23 Jun 1973 in Tauranga. He was born 21 Apr 1952 in Solomon Islands. She married (2) GEOFFREY PAUL KIDDEY 11 Apr 1989 in Rotorua. He was born 19 Feb 1955 in Christchurch.

Children of VIRGINIA HARTLEY and MARTIN MOLONEY are:

41. i. RYAN JOSEPH<sup>10</sup> MOLONEY, b. 10 Sep 1974, Whakatane.
42. ii. DANIEL JOHN MOLONEY, b. 21 Jul 1977, Whakatane.
- iii. ANNA JEAN MOLONEY, b. 02 Feb 1979, Whakatane.

**28.** PATRICIA JEAN<sup>9</sup> HARTLEY (*CHARLES WILLIAM<sup>8</sup>, CHARLES<sup>7</sup>, WILLIAM<sup>6</sup>, EDWARD<sup>5</sup>, JAMES<sup>4</sup>, JAMES<sup>3</sup>, JAMES<sup>2</sup>, RICHARD<sup>1</sup>*) was born 05 Nov 1954 in Auckland. She married CHRISTOPHER BARRY GILMORE 09 Mar 1974 in Tauranga. He was born 24 Mar 1948 in Croydon, London, England.

Children of PATRICIA HARTLEY and CHRISTOPHER GILMORE are:

43. i. FLEUR JEAN<sup>10</sup> GILMORE, b. 22 Jul 1977, Tauranga.
44. ii. CHRISTOPHER LUKE (LUKE) GILMORE, b. 25 Feb 1979, Tauranga.
47. iii. LISA MARY GILMORE, b. 03 Jan 1981, Tauranga.

**29.** CHARLES JOHN (JOHN)<sup>9</sup> HARTLEY (*CHARLES WILLIAM<sup>8</sup>, CHARLES<sup>7</sup>, WILLIAM<sup>6</sup>, EDWARD<sup>5</sup>, JAMES<sup>4</sup>, JAMES<sup>3</sup>, JAMES<sup>2</sup>, RICHARD<sup>1</sup>*) was born 28 Jun 1956 in Tauranga, and died 10 Feb 2001 in Kaiaua, Thames, NZ. He married VICKY HENSON in October 1985 in Perth, Australia. His partner was LOUISE BALFOUR who was born in Tauranga, New Zealand

Child of CHARLES HARTLEY and LOUISE BALFOUR is:

- i. JULIA JEAN<sup>10</sup> HARTLEY, b. 21 Aug 1995, Tauranga.

**30.** BRIAN PHILIP<sup>9</sup> HARTLEY (*CHARLES WILLIAM<sup>8</sup>, CHARLES<sup>7</sup>, WILLIAM<sup>6</sup>, EDWARD<sup>5</sup>, JAMES<sup>4</sup>, JAMES<sup>3</sup>, JAMES<sup>2</sup>, RICHARD<sup>1</sup>*) was born 12 Oct 1958 in Tauranga. He married MICHELLE ANN LONGLEY 02 Nov 1980 in Tauranga. She was born 25 Dec 1959 in Tauranga.

Children of BRIAN HARTLEY and MICHELLE LONGLEY are:

45. i. NICOLE MAREE<sup>10</sup> HARTLEY, b. 27 Sep 1984, Tauranga.
46. ii. JOSHUA CHARLES HARTLEY, b. 10 Jul 1986, Tauranga.

#### *Generation No. 10*

**31.** ROWAN JANE<sup>10</sup> BARBER (*ROBYN MARY<sup>9</sup> WINSTONE, PHYLLIS EDNA<sup>8</sup> HARTLEY, CHARLES<sup>7</sup>, WILLIAM<sup>6</sup>, EDWARD<sup>5</sup>, JAMES<sup>4</sup>, JAMES<sup>3</sup>, JAMES<sup>2</sup>, RICHARD<sup>1</sup>*) was born 08 Nov 1967 in Epsom, Auckland, New Zealand. Her partner was WYBO ANDREW VELDMAN, son of WYBO VELDMAN and ANNA WILSON. He was born 16 Apr 1959.

Child of ROWAN BARBER and WYBO VELDMAN is:

- i. MILTON ANDREW<sup>11</sup> BARBER, b. 11 Aug 1990, Wellington.

**32.** PAUL WINSTONE<sup>10</sup> BARBER (*ROBYN MARY<sup>9</sup> WINSTONE, PHYLLIS EDNA<sup>8</sup> HARTLEY, CHARLES<sup>7</sup>, WILLIAM<sup>6</sup>, EDWARD<sup>5</sup>, JAMES<sup>4</sup>, JAMES<sup>3</sup>, JAMES<sup>2</sup>, RICHARD<sup>1</sup>*) was born 12 Sep 1970 in Takapuna, Auckland, New Zealand. He married DEBORAH SARAH LAWRENCE 31 Mar 2018 in St Leonards Chapel, Takapuna, Auckland, daughter of GORDON LAWRENCE and ROBYN READ. She was born 01 Nov 1972 in Howick, Auckland.

Children of PAUL BARBER and DEBORAH LAWRENCE are:

- i. GWEN ROBYN<sup>11</sup> BARBER, b. 25 Oct 2012, Auckland.
- ii. MAISIE LAWRENCE BARBER, b. 15 Jul 2014, Auckland.

**33.** DAVID PETER<sup>10</sup> WINSTONE (*PETER ROSS<sup>9</sup>, PHYLLIS EDNA<sup>8</sup> HARTLEY, CHARLES<sup>7</sup>, WILLIAM<sup>6</sup>, EDWARD<sup>5</sup>, JAMES<sup>4</sup>, JAMES<sup>3</sup>, JAMES<sup>2</sup>, RICHARD<sup>1</sup>*) was born 05 Sep 1978 in Auckland. He married TERESA JEANNETTE KENNEDY 14 Feb 2004 in Melbourne. She was born 16 Jan 1978 in Melbourne.

Children of DAVID WINSTONE and TERESA KENNEDY are:

- i. CHIARA TERESA<sup>11</sup> WINSTONE, b. 17 Nov 2006, Warkworth.
- ii. SEAN DAVID WINSTONE, b. 28 Feb 2009, Takapuna.

**34.** GRETA FELICITY<sup>10</sup> WINSTONE (*PETER ROSS<sup>9</sup>, PHYLLIS EDNA<sup>8</sup> HARTLEY, CHARLES<sup>7</sup>, WILLIAM<sup>6</sup>, EDWARD<sup>5</sup>, JAMES<sup>4</sup>, JAMES<sup>3</sup>, JAMES<sup>2</sup>, RICHARD<sup>1</sup>*) was born 11 Jan 1981 in Warkworth. She married PETER ROBERT MASLIN 20 Sep 2003 in Tauranga. He was born 13 Nov 1978 in Christchurch.

Children of GRETA WINSTONE and PETER MASLIN are:

- i. AVA GRACE<sup>11</sup> MASLIN, b. 22 Jul 2005, Tauranga.
- ii. ISLA MAE MASLIN, b. 17 Apr 2010, Tauranga.

**35.** WILLIAM JAMES REID<sup>10</sup> WILSON (*SUSAN JANET<sup>9</sup> REID, NANCY DAWN<sup>8</sup> HARTLEY, CHARLES<sup>7</sup>, WILLIAM<sup>6</sup>, EDWARD<sup>5</sup>, JAMES<sup>4</sup>, JAMES<sup>3</sup>, JAMES<sup>2</sup>, RICHARD<sup>1</sup>*) was born 06 Feb 1972 in Rotorua. He married (1) LOVONNY JILLIAN GREENWOOD 22 Mar 1998 in Auckland. She was born 30 Dec 1969 in South Auckland. He married (2) NATASHA JANE EBERLE 27 Jan 2006 in Auckland. She was born 19 Apr 1973 in Torquay, England.

Child of WILLIAM WILSON and LOVONNY GREENWOOD is:

- i. DEVON JAMES REID<sup>11</sup> WILSON, b. 27 Jul 1999.

Children of WILLIAM WILSON and NATASHA EBERLE are:

- ii. PAIGE ELIZABETH<sup>11</sup> WILSON, b. 04 Aug 2006, Auckland.
- iii. ADAM JAMES WILSON, b. 29 Sep 2008, Auckland.

**36.** MATTHEW DENNESS<sup>10</sup> WILSON (*SUSAN JANET<sup>9</sup> REID, NANCY DAWN<sup>8</sup> HARTLEY, CHARLES<sup>7</sup>, WILLIAM<sup>6</sup>, EDWARD<sup>5</sup>, JAMES<sup>4</sup>, JAMES<sup>3</sup>, JAMES<sup>2</sup>, RICHARD<sup>1</sup>*) was born 27 Jul 1973 in Auckland. He married JOANNA JOCELYN (JO) RENFREE 02 Mar 2002 in Auckland. She was born 29 Mar 1972 in Dunedin, New Zealand.

Children of MATTHEW WILSON and JOANNA RENFREE are:

- i. EMMA RENFREE<sup>11</sup> WILSON, b. 15 Aug 2004, Auckland.
- ii. ALEX RENFREE WILSON, b. 16 Jun 2006, Auckland.

**37.** TRACEY HELEN<sup>10</sup> GIBSON (*JENNIFER HELEN<sup>9</sup> COLLINS, HELEN JOY<sup>8</sup> HARTLEY, CHARLES<sup>7</sup>, WILLIAM<sup>6</sup>, EDWARD<sup>5</sup>, JAMES<sup>4</sup>, JAMES<sup>3</sup>, JAMES<sup>2</sup>, RICHARD<sup>1</sup>*) was born 20 Jun 1976 in Tauranga. She married KELLY WOOD 23 Dec 2002 in Tauranga.

Children of TRACEY GIBSON and KELLY WOOD are:

- ii. LEAH ROSE<sup>11</sup> WOOD, b. 05 Nov 2003, Tauranga.
- iii. LUKE DOUGLAS WOOD, b. 16 Jan 2005, Tamaranui.

Child of TRACEY GIBSON and GARY BEACHAMP is:

- i. AVA ROSE<sup>11</sup> BEACHAMP, b. 02 Jun 2010, Taupo.

**38.** KATIE JENNIFER<sup>10</sup> GIBSON (*JENNIFER HELEN<sup>9</sup> COLLINS, HELEN JOY<sup>8</sup> HARTLEY, CHARLES<sup>7</sup>, WILLIAM<sup>6</sup>, EDWARD<sup>5</sup>, JAMES<sup>4</sup>, JAMES<sup>3</sup>, JAMES<sup>2</sup>, RICHARD<sup>1</sup>*) was born 31 Jan 1982 in Tauranga.

Children of KATIE GIBSON and KEVIN DEIGHTON are:

- i. HAYLEY KAILIN<sup>11</sup> DEIGHTON, b. 29 Oct 2011, Taupo.
- ii. CARLY JENNIFER DEIGHTON, b. 19 Feb 2014, Taupo.

**39.** MICHAEL GRAEME<sup>10</sup> GIBSON (*JENNIFER HELEN<sup>9</sup> COLLINS, HELEN JOY<sup>8</sup> HARTLEY, CHARLES<sup>7</sup>, WILLIAM<sup>6</sup>, EDWARD<sup>5</sup>, JAMES<sup>4</sup>, JAMES<sup>3</sup>, JAMES<sup>2</sup>, RICHARD<sup>1</sup>*) was born 23 Jul 1984 in Tauranga.

Child of MICHAEL GIBSON and BRIDELL MASON is:

- i. NIKAIA OPTIMUS<sup>11</sup> GIBSON, b. 22 Aug 2010 in Waikato; d. 30 Aug 2010.

**40.** STEVEN IAN<sup>10</sup> MATHESON (*DIANE GLORIA<sup>9</sup> COLLINS, HELEN JOY<sup>8</sup> HARTLEY, CHARLES<sup>7</sup>, WILLIAM<sup>6</sup>, EDWARD<sup>5</sup>, JAMES<sup>4</sup>, JAMES<sup>3</sup>, JAMES<sup>2</sup>, RICHARD<sup>1</sup>*) was born 06 Dec 1981 in Rotorua. He married JENNIFER SHEILA GRIFFITHS 23 Apr 2010 in Turangi, NZ.

Children of STEVEN MATHESON and JENNIFER GRIFFITHS are:

- i. JESSICA DIANE<sup>11</sup> MATHESON, b. 29 Apr 2012, Whanganui.
- ii. ANNABELLE JANET MATHESON, b. 09 Mar 2014, Whanganui.

**41.** RYAN JOSEPH<sup>10</sup> MOLONEY (*VIRGINIA ANNE<sup>9</sup> HARTLEY, CHARLES WILLIAM<sup>8</sup>, CHARLES<sup>7</sup>, WILLIAM<sup>6</sup>, EDWARD<sup>5</sup>, JAMES<sup>4</sup>, JAMES<sup>3</sup>, JAMES<sup>2</sup>, RICHARD<sup>1</sup>*) was born 10 Sep 1974 in Whakatane. He married HEIDI JANE MCCALLUM in Tauranga. She was born in Whakatane.

Children of RYAN MOLONEY and HEIDI MCCALLUM are:

- i. JADE ANNAGH<sup>11</sup> MOLONEY, b. 04 Nov 2006, Tauranga.
- ii. JED RYAN MOLONEY, b. 27 Oct 2009, Tauranga.

**42.** DANIEL JOHN<sup>10</sup> MOLONEY (*VIRGINIA ANNE<sup>9</sup> HARTLEY, CHARLES WILLIAM<sup>8</sup>, CHARLES<sup>7</sup>, WILLIAM<sup>6</sup>, EDWARD<sup>5</sup>, JAMES<sup>4</sup>, JAMES<sup>3</sup>, JAMES<sup>2</sup>, RICHARD<sup>1</sup>*) was born 21 Jul 1977 in Whakatane. His partner is LYNNICE ROBERTSON. She was born 28 Aug 1977 in Foxton.

Children of DANIEL MOLONEY and LYNNICE ROBERTSON are:

- i. JACK DANIEL<sup>11</sup> MOLONEY, b. 18 Jan 2000, Tauranga.
- ii. OLIVIA JEAN MOLONEY, b. 02 Dec 2002, Tauranga.

**43.** FLEUR JEAN<sup>10</sup> GILMORE (*PATRICIA JEAN<sup>9</sup> HARTLEY, CHARLES WILLIAM<sup>8</sup>, CHARLES<sup>7</sup>, WILLIAM<sup>6</sup>, EDWARD<sup>5</sup>, JAMES<sup>4</sup>, JAMES<sup>3</sup>, JAMES<sup>2</sup>, RICHARD<sup>1</sup>*) was born 22 Jul 1977 in Tauranga. She married DARREN CRAIG HOCKLY Jan 2001 in Tauranga. He was born 24 Jul 1972, and died 2013 in Te Puke.

Children of FLEUR GILMORE and DARREN HOCKLY are:

- i. MADELENE JEAN<sup>11</sup> HOCKLY, b. 15 Oct 1996, Tauranga. She married GEOFF ROODT 05 May 2018 in Tauranga. He was born 31 Jan 1997 in South Africa.
- ii. PAIGE LEANNE HOCKLY, b. 19 Dec 2000, Tauranga.

**44.** CHRISTOPHER LUKE (LUKE)<sup>10</sup> GILMORE (*PATRICIA JEAN<sup>9</sup> HARTLEY, CHARLES WILLIAM<sup>8</sup>, CHARLES<sup>7</sup>, WILLIAM<sup>6</sup>, EDWARD<sup>5</sup>, JAMES<sup>4</sup>, JAMES<sup>3</sup>, JAMES<sup>2</sup>, RICHARD<sup>1</sup>*) was born 25 Feb 1979 in Tauranga. His partner is JULIA KAYE CORNEY.

Child of CHRISTOPHER GILMORE and JULIA CORNEY is:

- i. SOPHIE KAY<sup>11</sup> GILMORE b. 9 Apr 2010 in Hamilton..

**45.** NICOLE MAREE<sup>10</sup> HARTLEY (*BRIAN PHILIP<sup>9</sup>, CHARLES WILLIAM<sup>8</sup>, CHARLES<sup>7</sup>, WILLIAM<sup>6</sup>, EDWARD<sup>5</sup>, JAMES<sup>4</sup>, JAMES<sup>3</sup>, JAMES<sup>2</sup>, RICHARD<sup>1</sup>*) was born 27 Sep 1984 in Tauranga. She married MATTHEW NILS WALLACE BRIDSON 14 Apr 2008 in Tauranga.

Children of NICOLE HARTLEY and MATTHEW BRIDSON are:

- i. ISABELLA POPPY<sup>11</sup> BRIDSON, b. 22 Apr 2010, Tauranga.
- ii. EMILY WALLACE BRIDSON, b. 24 Jun 2012, Tauranga; d. 24 Jun 2012, Tauranga.
- iii. GRACE CHARLI (CHARLI) BRIDSON, b. 03 Feb 2015, Tauranga.

**46.** JOSHUA CHARLES<sup>10</sup> HARTLEY (*BRIAN PHILIP<sup>9</sup>, CHARLES WILLIAM<sup>8</sup>, CHARLES<sup>7</sup>, WILLIAM<sup>6</sup>, EDWARD<sup>5</sup>, JAMES<sup>4</sup>, JAMES<sup>3</sup>, JAMES<sup>2</sup>, RICHARD<sup>1</sup>*) was born 10 Jul 1986 in Tauranga. His partner is MADELINE ROSE DUNLOP. She was born 15 Feb 1988 in Tauranga.

Child of JOSHUA HARTLEY and MADELINE DUNLOP is:

- i. VINCENT CHARLES<sup>11</sup> HARTLEY, b. 10 Apr 2016, Perth, Australia.
- ii. PAXTON OTIS HARTLEY, b. 19 May 2018, Tauranga

**47.** LISA MARY<sup>2</sup> GILMORE (*PATRICIA JEAN<sup>9</sup> HARTLEY, CHARLES WILLIAM<sup>8</sup>, CHARLES<sup>7</sup>, WILLIAM<sup>6</sup>, EDWARD<sup>5</sup>, JAMES<sup>4</sup>, JAMES<sup>3</sup>, JAMES<sup>2</sup>, RICHARD<sup>1</sup>*) was born 03 Jan 1981 in Tauranga. She married ANDREW ROBERT BELL 04 Mar 2006. He was born 21 Jan 1974.

Children of LISA GILMORE and ANDREW BELL are:

- i. LOGAN JOHN<sup>3</sup> BELL, b. 19 May 2007.
- ii. ALEX ANDREW BELL, b. 11 Feb 2009.





## *Descendants of Thomas Daw*

### *Generation No. 1*

1. THOMAS<sup>1</sup> DAW was born Abt. 1769 in Longhope, Gloucestershire, England. He married ELIZABETH MOTT 08 Apr 1729 in Warbleton, Sussex, England. She was born Abt. 1781 in Bulley, Gloucestershire, England.



*St Mary the Virgin church, Warbleton*

Child of THOMAS DAW and ELIZABETH MOTT is:

2. i. THOMAS<sup>2</sup> DAW, b. Abt. 1731, Longhope, Gloucestershire, England; d. 1805.

### *Generation No. 2*

2. THOMAS<sup>2</sup> DAW (*THOMAS<sup>1</sup>*) was born Abt. 1731 in Longhope, Gloucestershire, England, and died 1805. He married MARY HILTON 17 Oct 1768 in Willingdon, Sussex, England.

Child of THOMAS DAW and MARY HILTON is:

3. i. ELIZABETH<sup>3</sup> DAW, b. 1771, Wickwar, Gloucestershire, England; d. 28 Jun 1840, Wickwar, Gloucestershire, England.

### *Generation No. 3*

3. ELIZABETH<sup>3</sup> DAW (*THOMAS<sup>2</sup>, THOMAS<sup>1</sup>*) was born 1771 in Wickwar, Gloucestershire, England, and died 28 Jun 1840 in Wickwar, Gloucestershire, England. She married JOSEPH PULLAN 14 Jun 1797 in Wickwar, Gloucestershire, England, son of JOHN PULLAN and HANNA SMITH. He was born 1770 in Tytherington, Gloucestershire, England, and died 11 Dec 1812 in Gloucestershire, England.

Child of ELIZABETH DAW and JOSEPH PULLAN is:

4. i. ELIZABETH<sup>4</sup> PULLAN, b. Abt. 1800, Wickwar, Gloucestershire, England; d. Jan 1840, Gloucestershire, England.

*Generation No. 4*

4. ELIZABETH<sup>4</sup> PULLAN (*ELIZABETH<sup>3</sup> DAW, THOMAS<sup>2</sup>, THOMAS<sup>1</sup>*) was born Abt. 1800 in Wickwar, Gloucestershire, England, and died Jan 1840 in Gloucestershire, England. She married JAMES HARTLEY 30 Apr 1821 in Leeds, West Yorkshire, England, son of JAMES HARTLEY and MARTHA HODGON. He was born 17 Aug 1799 in Worthley, England.



*Wickwar, Gloucestershire*

Children of ELIZABETH PULLAN and JAMES HARTLEY are:

5. i. EDWARD<sup>5</sup> HARTLEY, b. 04 Sep 1822, Bramley, Yorkshire, England; d. 27 Oct 1907, Bradford, Yorkshire, England.
- ii. ANN HARTLEY.
- iii. CHRISTOPHER HARTLEY.
- iv. MARGARET HARTLEY.
- v. WILLIAM HARTLEY, b. Abt. 1821.

*For further generations see Descendants of Richard Hartley*



## *Descendants of James Parfitt*

### *Generation No. 1*

1. JAMES<sup>1</sup> PARFITT was born Abt. 1772. He married ISABELLA ?. She was born Abt. 1766.

Child of JAMES PARFITT and ISABELLA ? is:

2. i. WILLIAM ZELOPHEHAD<sup>2</sup> PARFITT, b. 14 Nov 1799, Yorkshire, England.

### *Generation No. 2*

2. WILLIAM ZELOPHEHAD<sup>2</sup> PARFITT (JAMES<sup>1</sup>) was born 14 Nov 1799 in Yorkshire, England. He married HANNAH (ANN) TOMLINSON 15 Jul 1820 in St Peter, Leeds, Yorkshire, England, daughter of JOHN TOMLINSON. She was born Abt. 1801 in Yorkshire, England.

Notes for WILLIAM ZELOPHEHAD PARFITT: William was a handle fitter in 1943



*The Daughters of Zelophehad*

The Daughters of Zelophehad were five sisters - Mahlah, Noah, Hoglah, Milcah, and Tirzah - mentioned in the Hebrew Bible, who lived at the end of the Israelites' Exodus from Egypt as they prepared to enter the Promised Land and who raised before the Israelite community the case of a woman's right and obligation to inherit property in the absence of a male heir in the family. Zelophehad (possibly meaning "first born"), a man of the Tribe of Manasseh, had five daughters but no sons, and therefore no male heirs.

Children of WILLIAM PARFITT and HANNAH TOMLINSON are:

3. i. CHARLOTTE ISABELLA<sup>3</sup> PARFITT, b. Abt. 1822, Leeds, Yorkshire, England; d. Sep 1898, West Riding, West Yorkshire, United Kingdom.
- ii. GEORGE PARFITT, b. 23 Apr 1821, Leeds, Yorkshire, England.
- iii. ELIZABETH PARFITT, b. Abt. 1826, Leeds, Yorkshire, England; d. 07 Feb 1905, Holyoke, Hampden, Massachusetts, USA.
- iv. JAMES PARFITT, b. 09 Dec 1830, Leeds, Yorkshire, England.
- v. MARY PARFITT, b. Abt. 1836, Leeds, Yorkshire, England.



*Generation No. 3*

3. CHARLOTTE ISABELLA<sup>3</sup> PARFITT (*WILLIAM ZELOPHEHAD<sup>2</sup>, JAMES<sup>1</sup>*) was born Abt. 1822 in Leeds, Yorkshire, England, and died Sep 1898 in West Riding, West Yorkshire, United Kingdom. She married EDWARD HARTLEY 11 Jun 1843 in St Marks Church, Woodhouse, Leeds, Yorkshire, son of JAMES HARTLEY and ELIZABETH PULLAN. He was born 04 Sep 1822 in Bramley, Yorkshire, England, and died 27 Oct 1907 in Bradford, Yorkshire, England.



Children of CHARLOTTE PARFITT and EDWARD HARTLEY are:

4.
  - i. WILLIAM<sup>4</sup> HARTLEY, b. 22 Feb 1847, Saltaire, Yorkshire, England; d. 22 Jan 1917, Wellington.
  - ii. SARAH JANE HARTLEY, b. Mar 1844, Hunslet, Yorkshire, England; d. 13 May 1905, Chicopee, Massachusetts, USA.
  - iii. CHARLES HARTLEY, b. 1846, Hallifax, Yorkshire, England.
  - iv. AMY HARTLEY, b. Abt. 1849, Bramley, Yorkshire, England.
  - v. JAMES HARTLEY, b. Abt. 1853, Leeds, Yorkshire, England; m. MARY ANN ?.
  - vi. FANNY HARTLEY, b. Abt. 1856, Holbeck, Yorkshire, England.
  - vii. SAMUEL HARTLEY, b. 1858, Holbeck, Yorkshire, England.
  - viii. ELIZA HARTLEY, b. 1861, Holbeck, Yorkshire, England.

*For further generations see Descendants of Richard Hartley*



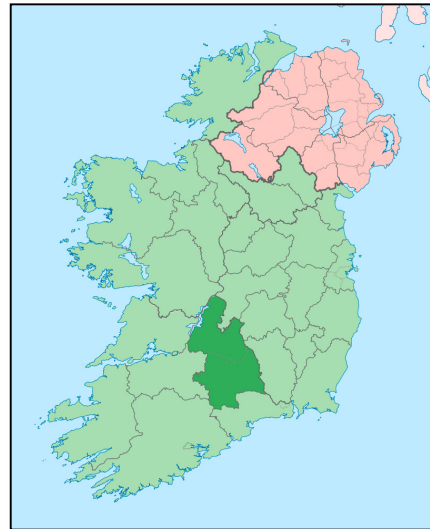
## *Descendants of William Richardson*

### *Generation No. 1*

1. WILLIAM<sup>1</sup> RICHARDSON was born Abt. 1800 in Tipperary, Ireland.

Child of WILLIAM RICHARDSON is:

2. i. WILLIAM<sup>2</sup> RICHARDSON, b. Abt. 1824, Tipperary, Ireland; d. Abt. 1891, Wellington.



*County Tipperary*

### *Generation No. 2*

2. WILLIAM<sup>2</sup> RICHARDSON (*WILLIAM*<sup>1</sup>) was born Abt. 1821 in Tipperary, Ireland, and died Abt. 1891 in Wellington. He married ANNIE MILLS Abt. 1850 in Middlesex, daughter of EDWARD MILLS. She was born Abt. 1824 in Sholswell, Leamington, Warwickshire, England.

Children of WILLIAM RICHARDSON and ANNIE MILLS are:

3. i. ELIZABETH ELLEN<sup>3</sup> RICHARDSON, b. Abt. 1857, Oxfordshire; d. 26 Nov 1925, Wellington.
- ii. MARY ANNE RICHARDSON, b. Abt. 1850, Neithrop, Oxfordshire, England.
- iii. CATHERINE RICHARDSON, b. Abt. 1853, England.
- iv. AGNES D RICHARDSON, b. Abt. 1855, England.
- v. FLORENCE A RICHARDSON, b. Abt. 1856, Kinnoull, Perth, Scotland.
- vi. THEOBOLD RICHARDSON, b. Abt. 1858, Kinnoull, Perth, Scotland.
- vii. JOHN I RICHARDSON, b. Abt. 1859, Kinnoull, Perth, Scotland.
- viii. CLARA L RICHARDSON, b. Abt. 1861, Kinnoull, Perth, Scotland.
- ix. CHARLES RICHARDSON, b. Abt. 1864, Essex, England.

### *Generation No. 3*

3. ELIZABETH ELLEN<sup>3</sup> RICHARDSON (*WILLIAM*<sup>2</sup>, *WILLIAM*<sup>1</sup>) was born Abt. 1857 in Oxfordshire, and died 26 Nov 1925 in Wellington. She married (1) WILLIAM HARTLEY 03 Oct 1879 in Wellington, son of EDWARD HARTLEY and CHARLOTTE PARFITT. He was born 22 Feb 1847 in Saltaire, Yorkshire, England, and died 22 Jan 1917 in Wellington. She married (2) HUBERT SCHOMBERG BRODERICK.

**BRODERICK.**—On the 26th November, 1925, at the Thorndon Private Hospital, Wellington, Elizabeth Ellen beloved wife of H. S. Broderick, of H.M. Customs, and relict of the late William Hartley, Petone; aged 69 years. Christchurch papers please copy.

Children of ELIZABETH RICHARDSON and WILLIAM HARTLEY are:

4. i. CHARLES<sup>4</sup> HARTLEY, b. 17 Jan 1886, Wellington; d. 14 May 1928, Tauranga.
- ii. ADA HARTLEY, b. 1880; d. 1965; m. ROBERT RISING.
5. iii. GERTRUDE HARTLEY, b. 1881.
6. iv. GRACE HARTLEY, b. 1883.
- v. ETHEL HARTLEY, b. 1884; m. SPIDER BRANDON.
7. vi. EDWARD HARTLEY, b. 1887; d. 1952.
8. vii. MAY HARTLEY, b. 1889.
9. viii. GEORGE HARTLEY, b. 1890.
10. ix. OLIVE HARTLEY, b. 1891.
11. x. HENRY HARTLEY, b. 1892.

*Generation No. 4*

**4.** CHARLES<sup>4</sup> HARTLEY (*ELIZABETH ELLEN<sup>3</sup> RICHARDSON, WILLIAM<sup>2</sup>, WILLIAM<sup>1</sup>*) was born 17 Jan 1886 in Wellington, and died 14 May 1928 in Tauranga. He married MABEL EMMA SHARON 19 Oct 1910 in Petone, daughter of EDWARD SHARON and ELIZA BROWN. She was born 22 May 1891 in Waihopo, Northland, and died 07 Feb 1976 in Tauranga.

Children of CHARLES HARTLEY and MABEL SHARON are:

12. i. PHYLLIS EDNA<sup>5</sup> HARTLEY, b. 19 Aug 1911, Kaponga, Taranaki; d. 27 Jul 1977, Auckland.
13. ii. NANCY DAWN HARTLEY, b. 11 Aug 1918, Tauranga d. 12 Jul 2007, Auckland.
14. iii. HELEN JOY HARTLEY, b. 02 Dec 1921, Tauranga.
15. iv. CHARLES WILLIAM HARTLEY, b. 05 Nov 1925, Tauranga. d. 17 Jun 2011, Tauranga

*For further generations see Descendants of Richard Hartley*



# *Bibliography*

This book is intended as a biography and history of the Hartley and related families. It is our intention that this book will be interesting to read, informative and an heirloom for the family. It is not intended to be a clinical reference book. Every effort has been made to present the most accurate information available. Many source references are included throughout the book.

The information in this book has been gathered from a wide spectrum of sources: significant data, manuscripts, documents, census information, partial family trees, letters, certificates, photographs and images. Other members of the family also contributed information and documentation. Numerous on-line sources were used in the quest to build a comprehensive history of the family and although we acknowledge that on-line data can be flawed, we have at all times attempted to verify information from the Internet by cross-referencing from other unrelated sites.

No data, images or material has been used for nor intended to be used for commercial purposes – all material has been used to illustrate of describe our family history.

The major sources used include

*(n.b. many other websites, too numerous to document here, were also used to cross-reference data):*

Robyn Winstone

The Winstone & Hartley families

Winstone archives

Colin Henderson's achives and writings

Family contributions from Patricia Gilmore, Susan Wilson, Jennifer Collins and others

<http://www.ancestry.com/search/default.aspx>

<http://wc.rootsweb.ancestry.com/cgi-bin/igm.cgi>

[http://www.familysearch.org/Eng/Search/frameset\\_search.asp?PAGE=igi/search\\_IGI.asp&clear\\_form=true](http://www.familysearch.org/Eng/Search/frameset_search.asp?PAGE=igi/search_IGI.asp&clear_form=true)

<http://paperspast.natlib.govt.nz/cgi-bin/paperspast>

<http://ndpbeta.nla.gov.au/ndp/del/home>

<http://pandora.nla.gov.au/pan/10421/20041220-0000/www.firstfamilies2001.net.au/search.html>

[http://www.records.nsw.gov.au/archives/indexes\\_online\\_3357.asp](http://www.records.nsw.gov.au/archives/indexes_online_3357.asp)

<http://muse.aucklandmuseum.com/databases/cenotaph/locations.aspx>

<http://homepages.ihug.co.nz/~ashleigh/>

<http://www.cornwall-opc->

[database.org/searchdb.php?yr=1822&pr=Illogan&forename=&surname=rule&father=&mother=&records=50&db name=baptisms&Submit=Search](http://database.org/searchdb.php?yr=1822&pr=Illogan&forename=&surname=rule&father=&mother=&records=50&db name=baptisms&Submit=Search)

<http://search.labs.familysearch.org/recordsearch/start.html#p=0>

<http://freepages.history.rootsweb.ancestry.com/~althea/Thames%20Cemeteries%20Burials%20Pre%201900.htm>

[http://www.northshorecity.govt.nz/cemetery/cemetery\\_search.asp](http://www.northshorecity.govt.nz/cemetery/cemetery_search.asp)

<http://wc.rootsweb.com/cgi-bin/igm.cgi>

[http://www.familysearch.org/Eng/Search/frameset\\_search.asp?PAGE=igi/search\\_IGI.asp&clear\\_form=true](http://www.familysearch.org/Eng/Search/frameset_search.asp?PAGE=igi/search_IGI.asp&clear_form=true)

<http://genforum.genealogy.com/timms/>

<http://72.14.253.104/search?q=cache:MaVSyRH6vnMJ:www.timms.ca/drt/ghtout/gp820.html+%22john+timms%22+warwickshire&hl=en&ct=clnk&cd=5&gl=nz>

<http://www.britishtree.homestead.com/files/aqwg51.htm>

<http://heardfamilytree.co.uk/ht1766/d1.htm>

<http://www.earthenchild.pwp.blueyonder.co.uk/1222.htm>

<http://search.ancestry.co.uk/cgi->

[bin/sse.dll?rank=0&gsfn=thomas&gsln=timms&sx=&f1=&f2=&f4=&f18=&f12\\_\\_n=&rg\\_81004011\\_\\_date=1856&rs\\_81004011\\_\\_date=1&f27=&f14=&f15=&\\_8000C002=&\\_80008002=&\\_80018002=&f7=&f8=&f9=&gskw=&prox=1&db=uki1861&ti=5538&ti.si=0&gl=&gss=IMAGE&gst=&so=3](http://bin/sse.dll?rank=0&gsfn=thomas&gsln=timms&sx=&f1=&f2=&f4=&f18=&f12__n=&rg_81004011__date=1856&rs_81004011__date=1&f27=&f14=&f15=&_8000C002=&_80008002=&_80018002=&f7=&f8=&f9=&gskw=&prox=1&db=uki1861&ti=5538&ti.si=0&gl=&gss=IMAGE&gst=&so=3)

<http://www.heraldry.ws/>

<http://www.surnamedb.com/surname.aspx?name=Atkins>

<http://www.4crests.com/herclas1.html>

<http://www.theshipslist.com/>

<http://ourauklandstuff.freesevers.com/KendallPrefix.HTM>

<http://www.everymanremembered.org/search/>

<http://www.histarmar.com.ar/ArchivoFotosGral-2/BuquesSudAfrica-AB.htm>

<https://news.google.com/newspapers?hl=en>

<http://shadowsoftime.co.nz/b&d.html>

<http://www.junipergallery.com/taxonomy/term/140>

[http://www.digitalnz.org/records?i%5Bcontent\\_partner%5D=Archives+New+Zealand+Te+Rua+Mahara+o+te+K%C4%81wanatanga&i%5Bprimary\\_collection%5D=Archway](http://www.digitalnz.org/records?i%5Bcontent_partner%5D=Archives+New+Zealand+Te+Rua+Mahara+o+te+K%C4%81wanatanga&i%5Bprimary_collection%5D=Archway)

<http://www.digitalnz.org/>

<https://www.elgar.govt.nz/patroninfo~S1?/0/redirect=/validate?url=http%3A%2F%2F0-find.galegroup.com.www.elgar.govt.nz%3A80%2Fbncn%2Fstart.do%3FprodId%3DBNWS%26userGroupName%3Dauclib>  
<http://www.stats.govt.nz/yearbooks>  
<https://atojs.natlib.govt.nz/cgi-bin/atojs>  
<http://www.dkdonovan.com/surnames.php>  
<http://wc.rootsweb.ancestry.com/cgi-bin/igm.cgi?db=dowfam3>  
<https://www.iannounce.co.uk/>  
<http://www.domesdaybook.co.uk/contents.html>  
[http://www.ancestry.com.au/dynamic/bmd2010?o\\_jid=44508&o\\_lid=44508&o\\_sch=Web+Property](http://www.ancestry.com.au/dynamic/bmd2010?o_jid=44508&o_lid=44508&o_sch=Web+Property)  
<http://www.stats.govt.nz/yearbooks>  
<http://www.aucklandcity.govt.nz/dbtw-wpd/Fedsearch/Combinedsearchquery.htm>  
<http://www.aucklandcity.govt.nz/dbtw-wpd/passengers/passenger.html>  
<http://www.aucklandcity.govt.nz/dbtw-wpd/vessels/vessels.html>  
<http://www.aucklandcity.govt.nz/dbtw-wpd/policecensus/census.html>  
<http://manukau.infospecs.co.nz/footprints/search.htm>  
<http://www.aucklandcity.govt.nz/dbtw-wpd/nzcardindex/>  
<http://www.aucklandcity.govt.nz/dbtw-wpd/msonline/index.htm>  
<http://www.aucklandcity.govt.nz/dbtw-wpd/symondsst/sscem.html>  
<http://www.aucklandcity.govt.nz/dbtw-wpd/cemeteries/cemetery.html>  
<http://www.aucklandcity.govt.nz/dbtw-wpd/heritageimages/index.htm>

### ***E & OE.***

***If you have any information that can be added, changed or enhanced then please contact us and we may be able to include it in future printings of this book.***



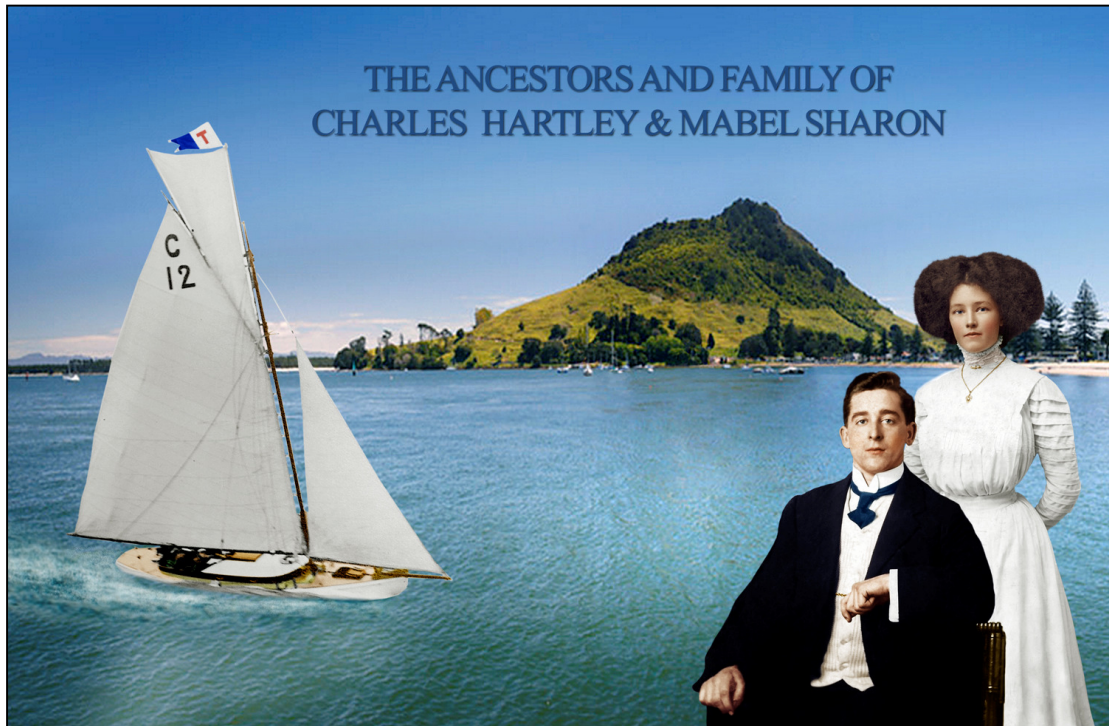


ABOUT IAN HANDRICKS  
Genealogist

This book was written, researched and published by Ian Handricks and Robyn Winstone. Ian has been a professional genealogist, researcher and author for over 40 years and has worked alongside Robyn for several years documenting the rich history of the Winstone and related families. Ian's extensive personal genealogy database provided the source of connections and relationships that provide the structure of this book. Many months of hard work, discussions over dinner, wit, wisdom and differing points of view have lead to a long-lasting and valued friendship.



*Ian Handricks*



*Book Cover : Charles & Mabel Hartley (nee Sharon)  
alongside their yacht, "Vanitie" in Tauranga Harbour (Mt Maunganui in the background)*

© Robyn Winstone

Contents of this book are the copyright of Robyn Winstone of Auckland, New Zealand

It is acknowledged that a significant amount of information, images, letters, documents  
used in this book have been included from a wide range of sources  
(see Bibliography).

This book was written especially for the Hartley and related families for their private use.  
It is a non-commercial record of our family  
and is not intended for sale

